

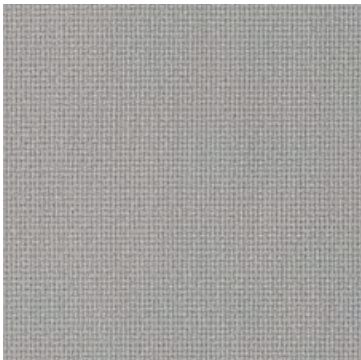
**KRALL  
+ROTH**

**LANO**

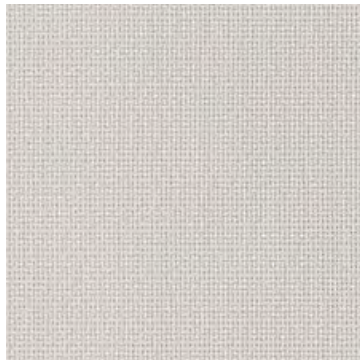
---

SPECTRUM KOLLEKTION | COLLECTION

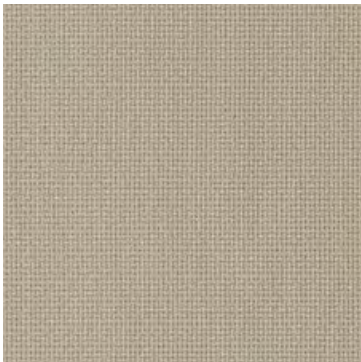
# LANO



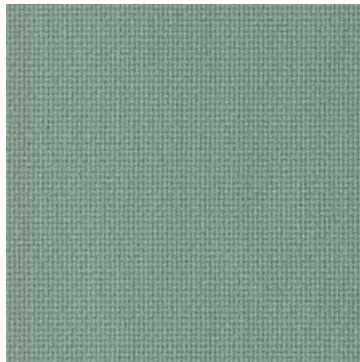
13



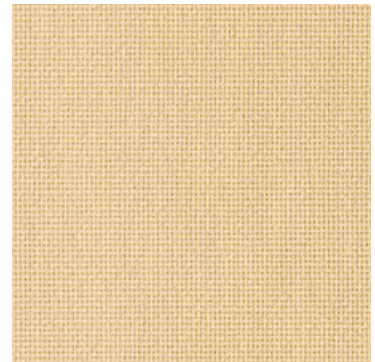
20



12



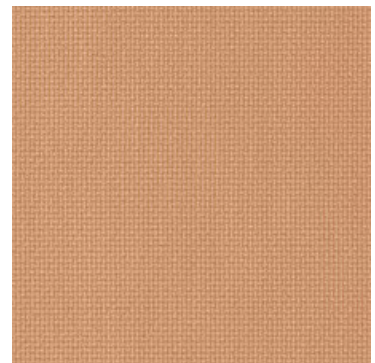
14



30



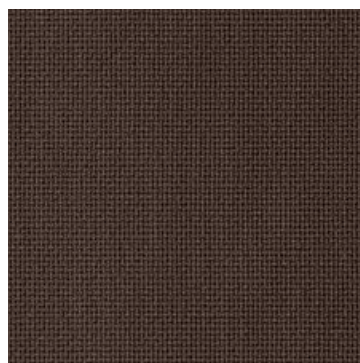
11



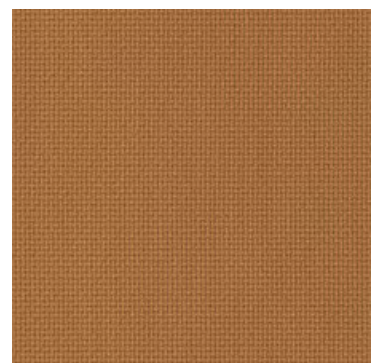
42



10

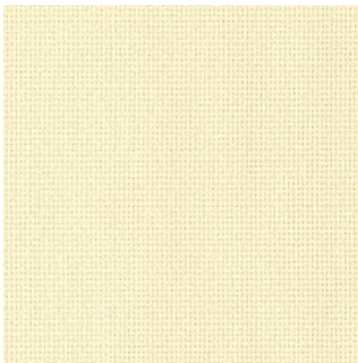


40

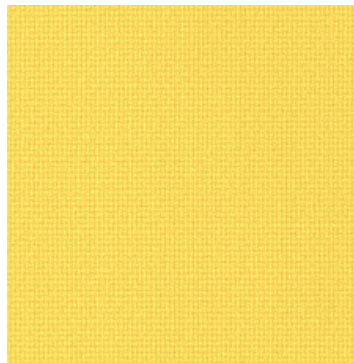


41

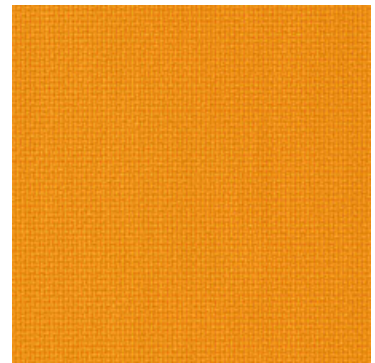
# LANO



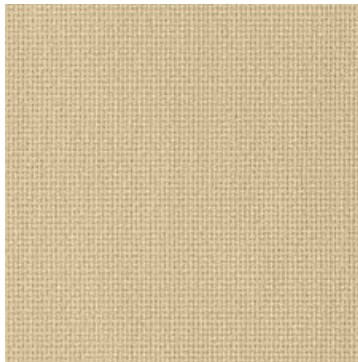
33



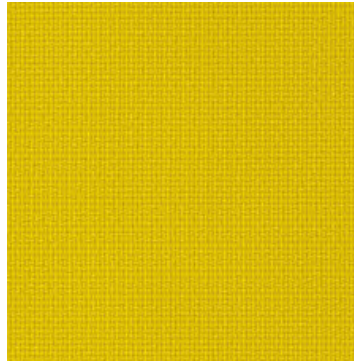
50



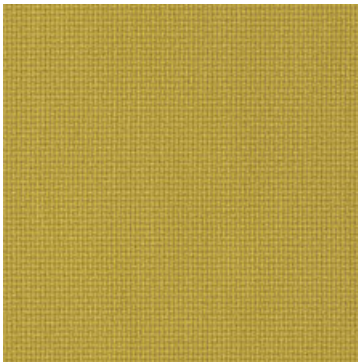
610



32



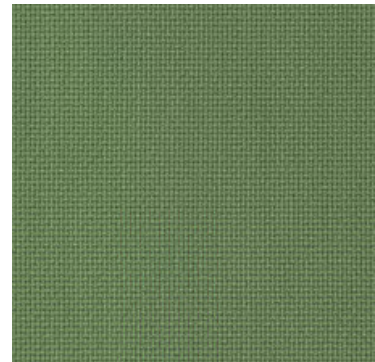
51



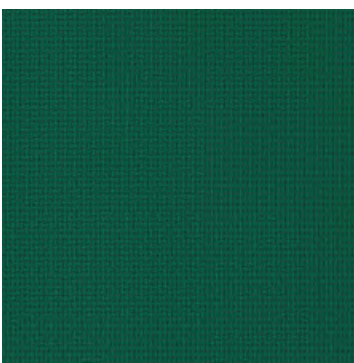
90



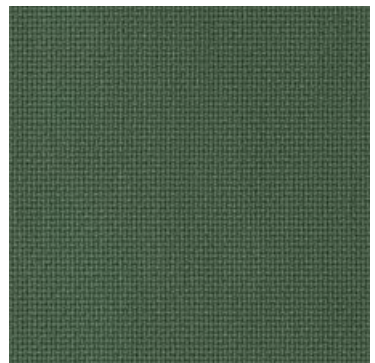
91



92



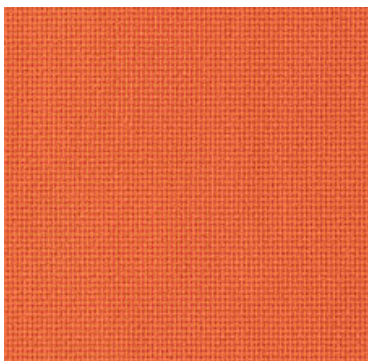
93



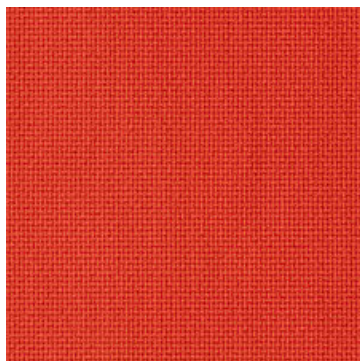
94



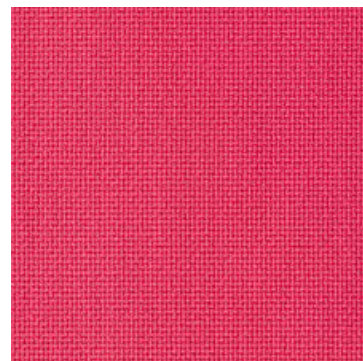
# LANO



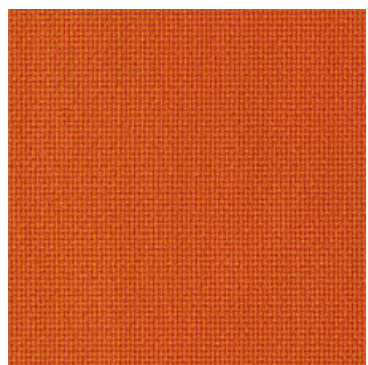
69



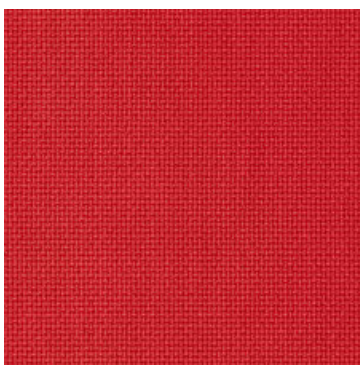
65



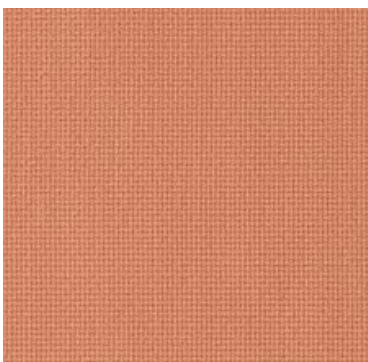
66



68



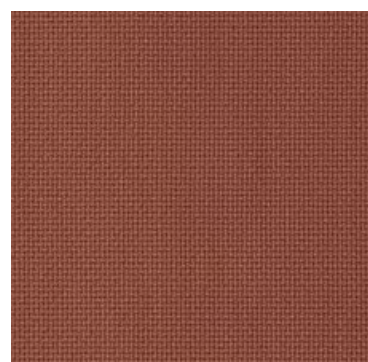
60



67



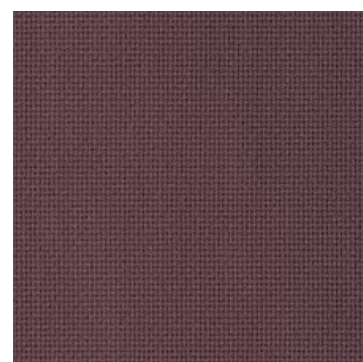
64



62



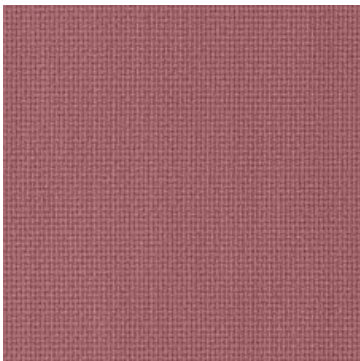
61



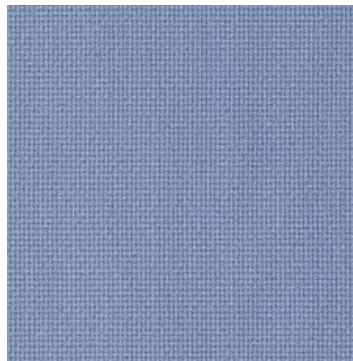
63



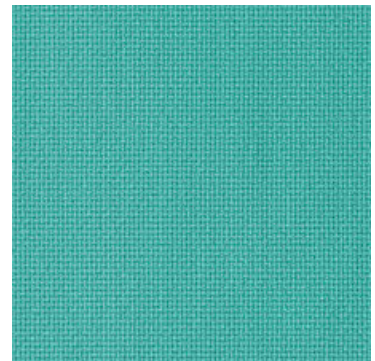
# LANO



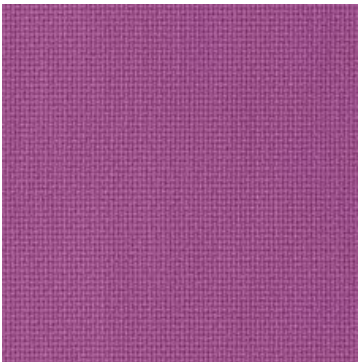
76



73



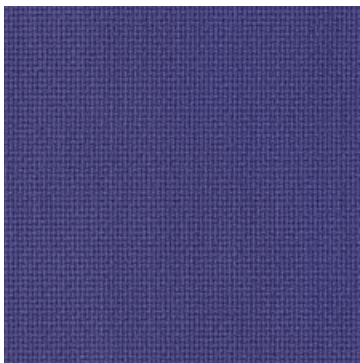
81



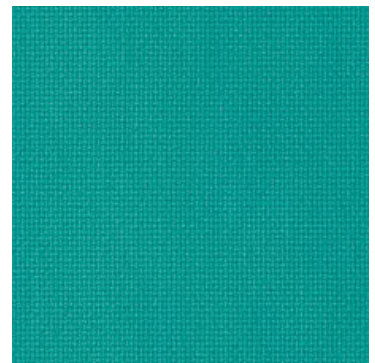
75



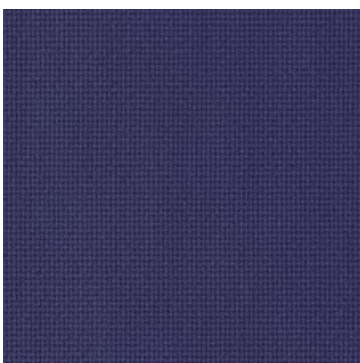
71



72



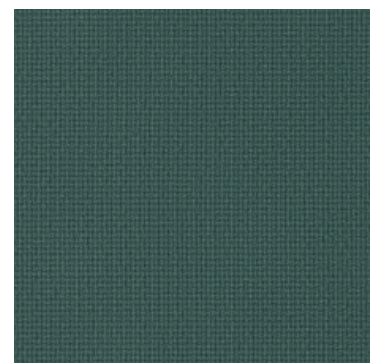
80



74



70



83

## ZUSAMMENSETZUNG

85 % Schurwolle  
15 % Polyamid

## BREITE

140 cm

## GEWICHT

ca. 520 g/lfdm

## STANDARD 100 by OEKO-TEX®

08.0.57988 Hohenstein

## SCHEUERVERHALTEN

Martindale (Belastung 12 Kpa)  
DIN EN ISO 12947-2: 2007  
150.000 Touren

## BRANDVERHALTEN

D - DIN EN 1021: 2006 Teil 1 (Zigarettestest) und Teil 2 (Butanflammentest) in Kombination mit Schaumstoff B 3 normal brennbar mind. 22 kg/m<sup>3</sup> Raumgewicht Klassifizierung des Brandverhaltens des Polsterverbundes nach DIN 66084 P-b  
GB - British Standard 7176: 2007 Ignition Source 0, 1 + 5 in Kombination mit schwerentflammbarem Schaumstoff CMHR mind. 35 kg/m<sup>3</sup> Raumgewicht - Medium hazard  
A - ÖNorm B 3825 schwerbrennbar in Kombination mit schwerbrennbarem Schaumstoff  
ÖNorm A 3800-1 Q1

## LICHTECHTHEIT

DIN EN ISO 105-B02: 2014  
5

## REIBECHTHEIT

DIN EN ISO 105-X12: 2016  
4 - 5 trocken und nass

## SCHWEISSECHTHEIT

DIN EN ISO 105-E04: 2013  
4 - 5 sauer und alkalisch

## TROCKENREINIGUNGSECHTHEIT

DIN EN ISO 105-D01: 2010  
4 - 5

## REINIGUNGSANLEITUNG

Festverspannte Bezüge: Absaugen, Trockenschäumreinigung  
Abnehmbare Bezüge: Chemische Reinigung

Für weitere Auskünfte stehen wir Ihnen gerne zur Verfügung

## COMPOSITION

85 % Virgin Wool  
15 % Polyamid

## WIDTH

140 cm

## WEIGHT

approx. 520 g/lm

## STANDARD 100 by OEKO-TEX®

08.0.57988 Hohenstein

## ABRASION RESISTANCE

Martindale (load 12 Kpa)  
DIN EN ISO 12947-2: 2007  
150.000 cycles

## FLAMMABILITY

D - DIN EN 1021: 2006 part 1 (cigarette test) and part 2 (butane flame test) when tested with non flame retardant foam B 3 density 22 kg/m<sup>3</sup> minimum ignitability classification of the upholstery composite according to DIN 66084 P-b  
GB - British Standard 7176: 2007 Ignition Source 0, 1 + 5 when tested with flame retardant foam CMHR density 35 kg/m<sup>3</sup> minimum - Medium hazard  
A - ÖNorm B 3825 flame retardant when tested with flame retardant foam  
ÖNorm A 3800-1 Q1

## FASTNESS TO LIGHT

DIN EN ISO 105-B02: 2014  
5

## FASTNESS TO RUBBING

DIN EN ISO 105-X12: 2016  
4 - 5 dry and wet

## FASTNESS TO PERSPIRATION

DIN EN ISO 105-E04: 2013  
4 - 5 acid and alkaline

## FASTNESS TO DRY CLEANING

DIN EN ISO 105-D01: 2010  
4 - 5

## CLEANING

Fixed covers: vacuum cleaning, cleaning with dry foam  
Removable covers: dry cleaning

Please feel free to contact us for any further information

## 成份

85 % 純新羊毛  
15 % 聚酰胺

## 寬度

140 厘米

## 重量

約: 520 g/lm

## 標準 100 by OEKO-TEX®

08.0.57988 Hohenstein

## 抗磨性

馬丁代爾 (裝載 12Kpa)  
DIN EN ISO 12947-2: 2007  
150.000 個循環

## 阻燃

D - DIN EN 1021: 2006 第 1 部分 (香煙測試) 和第 2 部分 (丁烷火焰試驗) 與非阻燃泡綿 B 3 密度 22 kg/m<sup>3</sup> 最低內飾的可燃性分級複合材料, 根據 DIN 66084 P-b  
GB - 英國標準 7176: 2007 測試時點火源 0, 1 + 5 阻燃泡綿 CMHR 密度 35 kg/m<sup>3</sup> - Medium hazard  
A - Önorm B 3825 阻燃時用阻燃泡綿測試根據 ÖNorm A 3800-1 Q1

## 耐光牢度

DIN EN ISO 105-B02: 2014  
5

## 耐摩擦性

DIN EN ISO 105-X12: 2016  
4 - 5 乾濕

## 耐汗

DIN EN ISO 105-E04: 2013  
4 - 5 酸和鹼

## 耐乾洗性

DIN EN ISO 105-D01: 2010  
4 - 5

## 清潔

固定蓋: 真空清洗  
用乾燥泡綿清洗  
可拆卸蓋: 乾洗

請隨時聯繫我們以獲取更多信息